

63

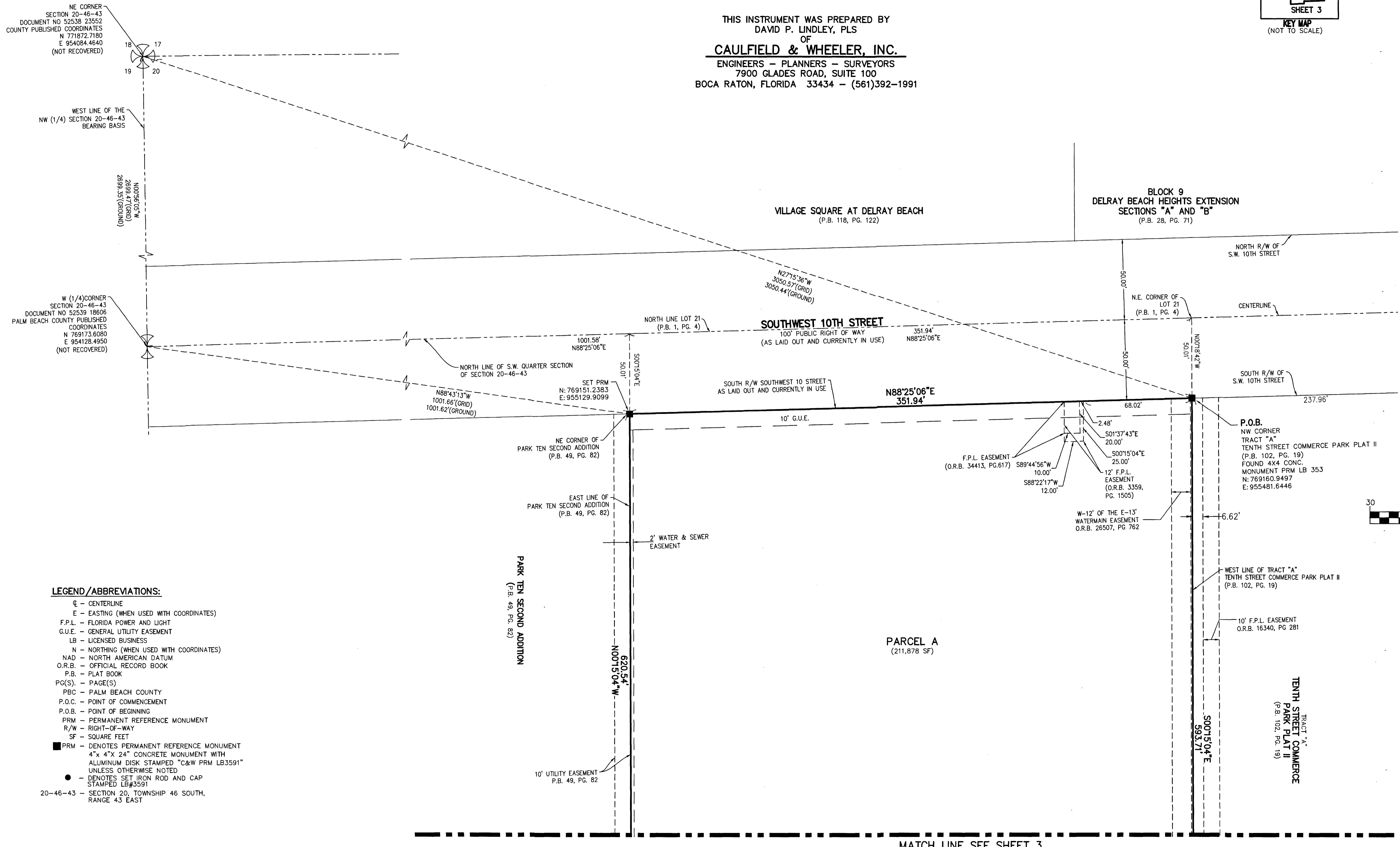
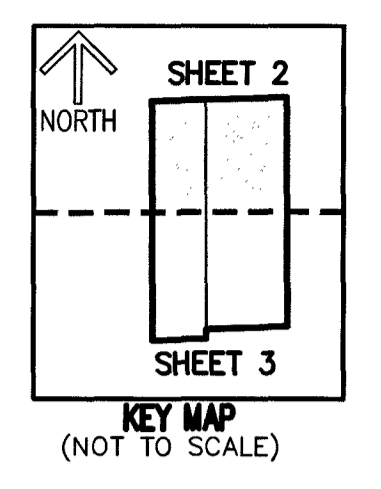
SHEET 2 OF 3

"NOTICE" THIS PLAT, AS RECORDED IN ITS GRAPHIC FORM, IS THE OFFICIAL DEPICTION OF THE SUBDIVIDED LANDS DESCRIBED HEREIN AND WILL IN NO CIRCUMSTANCES BE SUPPLANTED IN AUTHORITY BY ANY OTHER GRAPHIC OR DIGITAL FORM OF THE PLAT. THERE MAY BE ADDITIONAL RESTRICTIONS THAT ARE NOT RECORDED ON THIS PLAT THAT MAY BE FOUND IN THE PUBLIC RECORDS OF PALM BEACH COUNTY.

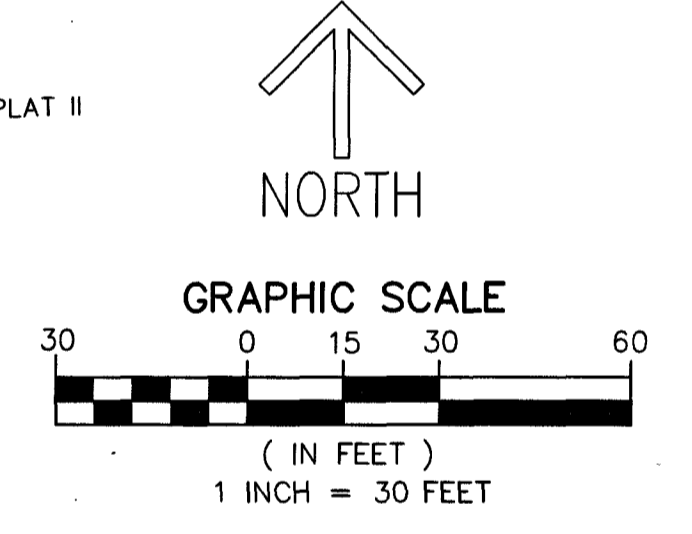
ALL COUNTY PAVING

BEING A PORTION OF LOT 21, MAP SHOWING PORTIONS OF TOWNSHIP 45 AND 46 SOUTH, RANGE 43 EAST, ACCORDING TO THE PLAT THEREOF, AS RECORDED IN PLAT BOOK 1, PAGE 4, OF THE PUBLIC RECORDS OF PALM BEACH COUNTY, FLORIDA, LYING IN SECTION 20, TOWNSHIP 46 SOUTH, RANGE 43 EAST, CITY OF DELRAY BEACH, PALM BEACH COUNTY, FLORIDA.

THIS INSTRUMENT WAS PREPARED BY
DAVID P. LINDLEY, PLS
OF
CAULFIELD & WHEELER, INC.
ENGINEERS - PLANNERS - SURVEYORS
7900 GLADES ROAD, SUITE 100
BOCA RATON, FLORIDA 33434 - (561)392-1991



- LEGEND/ABBREVIATIONS:**
- CL - CENTERLINE
 - E - EASTING (WHEN USED WITH COORDINATES)
 - F.P.L. - FLORIDA POWER AND LIGHT
 - G.U.E. - GENERAL UTILITY EASEMENT
 - LB - LICENSED BUSINESS
 - N - NORTHING (WHEN USED WITH COORDINATES)
 - NAD - NORTH AMERICAN DATUM
 - O.R.B. - OFFICIAL RECORD BOOK
 - P.B. - PLAT BOOK
 - PG(S). - PAGE(S)
 - PBC - PALM BEACH COUNTY
 - P.O.C. - POINT OF COMMENCEMENT
 - P.O.B. - POINT OF BEGINNING
 - PRM - PERMANENT REFERENCE MONUMENT
 - R/W - RIGHT-OF-WAY
 - SF - SQUARE FEET
 - PRM - DENOTES PERMANENT REFERENCE MONUMENT 4" x 4" x 24" CONCRETE MONUMENT WITH ALUMINUM DISK STAMPED "C&W PRM LB3591" UNLESS OTHERWISE NOTED
 - DENOTES SET IRON ROD AND CAP STAMPED LB#3591
 - 20-46-43 - SECTION 20, TOWNSHIP 46 SOUTH, RANGE 43 EAST



NOTES
COORDINATES, BEARINGS AND DISTANCES
COORDINATES SHOWN ARE GRID
DATUM = NAD 83 (1990 ADJUSTMENT)
ZONE = FLORIDA EAST
LINEAR UNIT = U.S. SURVEY FEET
COORDINATE SYSTEM 1983 STATE PLANE
TRANSVERSE MERCATOR PROJECTION
ALL DISTANCES ARE GROUND, UNLESS OTHERWISE NOTED
SCALE FACTOR = 1.000042942
GROUND DISTANCE X SCALE FACTOR = GRID DISTANCE
BEARINGS AS SHOWN HEREON ARE GRID DATUM,
NAD 83 (1990 ADJUSTMENT), FLORIDA EAST ZONE.

MATCH LINE SEE SHEET 3